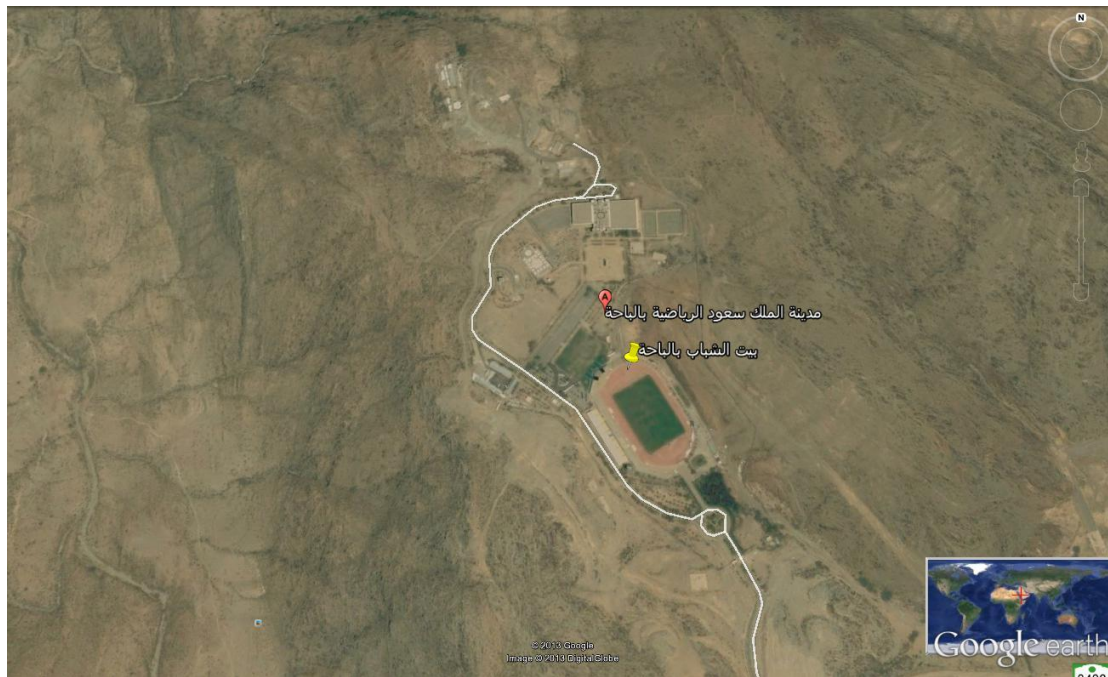


## Youth Dorm in Al Al Baha Region

Location

Width: 20.080069 °

Height 41.524406 °



House facilities

Size of the House: Number of beds 101

Internal services

<p><b>Main Site</b></p> <ul style="list-style-type: none"><li>Reservation Center (for International Youth Dorms)</li><li>Conferences Facilities</li><li>Money Exchange</li><li>Bicycle Rental</li><li>Bicycle Parking Area</li></ul>	<p><b>Laundry Services</b></p> <ul style="list-style-type: none"><li>Library/ Book Exchange</li><li>Smoking Area</li><li>Smoking Rooms</li><li>Sports Equipment Storage Areas</li><li>Travel Agencies</li></ul>
--	---

Air Conditioner Yes Closets Yes Luggage Room Yes Parking Areas for Cars Inside the Dorm Near the Dorm	Food and Drinks Locations Inside the Dorm / Nearby Restaurant Café Licensed Bar Kitchen Vending Machine
---	--

### Entertainment and Fitness Facilities

Public Room Disco Games Room Garden Athletics Area Jacuzzi Football field	Snooker Table Sauna Swimming Pool T.V. Room Ping Pong Terrace- Entrance
---	--

Entrance Right

Entrance on wheelchairs for handicapped

Suitable for handicapped

Unsuitable for handicapped

Elevator

Yes

Personal Laptops and Internet

PCs For Free	Wi-Fi Free	Nearby Internet Café
-----------------	---------------	----------------------

Chargeable unavailable	Chargeable Unavailable	
---------------------------	---------------------------	--

## Sports and Activities

Please define what types of sport activities is suitable for your youth dorms

The below activities may be available at your dorm or at a nearby dorm

Athletics Baseball Bird watching Rowing Boat Riding Cricket Bike Riding Dancing Hunting/ Fishing Football Diving Surfing Skiing Swimming Tennis	Golf Handball Hockey Horse Riding Rescue Bicycling Mountain Climbing Rock Climbing Rugby Yachts Volleyball Hiking Snakes Watching Panels Riding Team Building
---	---

## Essential Information about the House

Information related to candidates

Husband and Wife Families Groups Pets
--

Opening Schedule for the year 2014

Always Open
-------------

Closes in some days of the year

### Reception Schedule

Open 24 hours a day  
Closes at night

### Registration

24 hours a day  
Defined hours for registration

Fees Members' Fees Fees of Non-members	Membership Membership Required Minimum age : 16 Number of years : 1 year
--	---

### Other

A Governmental tax is paid upon late arrival/ late registration  
Calling the house upon late arrival/ late registration  
Defined time for entering the rooms

### Social Media

Email

Facebook Account

Albahah@SAYHA.ORG.SA

5- Tourism Areas and information about the current area

Raghdan Forest      14 Kilometers from the house

Shokran Park      57 Kilometers from the house

Zy Ayn Historical Town      37 meters from the house

### General Tourism Areas

Define the areas that are available near the house, please select the nearby places only

City Center- Public Garden- Parking areas- Port- Historical Site- Local Market- Exhibitions- Restaurants- Shopping areas- Supermarket- Theater- beach

### Entertainment and Fitness

Nearby parks

Bike riding

Golf fields

Athletics gym

Hiking

Skiing Areas

Swimming Pool

Water Garden

### Images

Pool



Bedrooms



